

TECHNICAL SPECIFICATION

Atreyo Waste Management System Sensor

AWMS-DBS12



Features

- Garbage level detection
- Thermal alert
- Vibration detection alert
- Robust design
- Remote setting option
- IP66 protection
- Extended battery life

Atreyo waste management system is IoT based efficient way to reduce waste collection costs with real time dustbin location update and waste fill-level detection.

Bin Sensor detects the fill-level of waste bins and sends the data to the server, which helps to optimise the route for

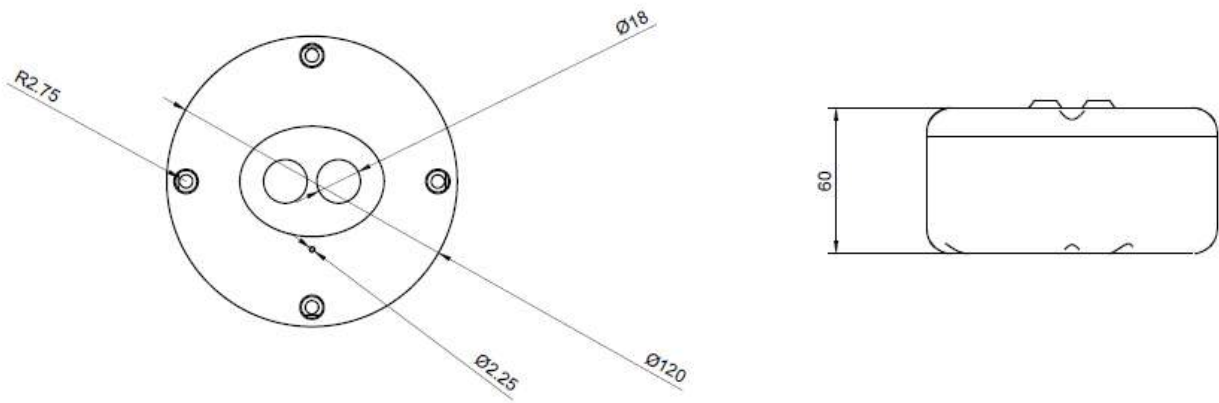
waste collection vehicle. Waste management system helps to reduces time waste and cost.

AWMS-DBS12 is sensor to detect garbage level in dustbins. Sensor is detecting garbage in defined interval of time and sending the garbage data to the server. High temperature and vibration alerts are send instantly.

Category	Description
Dimension	Ø 120mm, height 60mm
Material of body	ABS
Principle of operation	Ultrasonic measurement system
Detection range	Configurable: 10 - 250cm
Communication with server	GPRS
Battery lifetime (storage mode)	10 years
Battery life (work mode)	Approx. 5 year (considering 3 communication per day with server)
Battery type	Non rechargeable Lithium Battery
Working mode types:	Work mode Setting mode

Category	Description
	Sleep mode
Vibration sensor	With configuration of vibration time alert
Temperature sensor	With temperature alert setting
Indicator in setting mode	Multi-colour LED indicator
Configuration	By SMS
Environmental	Operating temperature from -5°C to +80°C Humidity: 5% to 95% RH IP protection IP66

Dimensions of bin sensor device:



Copyright

Copyright © 2019 Atreyo Research and Development LLP. This technical specification is protected under national and international copyright laws. No part of this user manual may be reproduced, distributed, translated, or transmitted in any form or by any means, electronic or mechanical, including photocopying, recording, or storing in any information storage and retrieval system, without the prior written permission of Atreyo Research and Development LLP. Copy or use any part of this specifications is prohibited without the prior written permission from the Atreyo Research and Development LLP. Atreyo Research and Development LLP shall not unreasonably withhold or deny such consent but shall be entitled to receive additional equitable remuneration in connection with its grant of consent.

Trademarks

Atreyo and the Atreyo logo are registered trademarks of Atreyo Research and Development LLP.

All other trademarks and copyrights are the property of their respective owners.

Disclaimer

- All dimensions mentioned in the drawings are not to scale and may vary/differ due to construction contingencies and site conditions which are subject to change as may be decided by the company.
- The specifications and amenities mentioned in this document and promotional documents are only representational and informative. The descriptions in this specification are based on the default configuration of your device.
- Images used in this specification may differ in appearance from the actual product.
- The Research and Development LLP reserves rights to make additions, deletions, alterations or amendments as and when it deems fit and proper, without any prior notice.