

Features

- Up to 3 line of text in Hindi, Gujarati, Marathi, Malayalam etc.
- Up to 4 line in English
- Flexible size text region design
- 7 Colours for each region of display
- Support all font styles
- All Indian alphabets support
- High brightness
- Light weight thin aluminium body
- Front maintenance
- Inbuilt controller

The AVMD-128-48M is LED variable message display dedicated to passenger information, parking systems, air quality, railway station, petrol pumps etc.

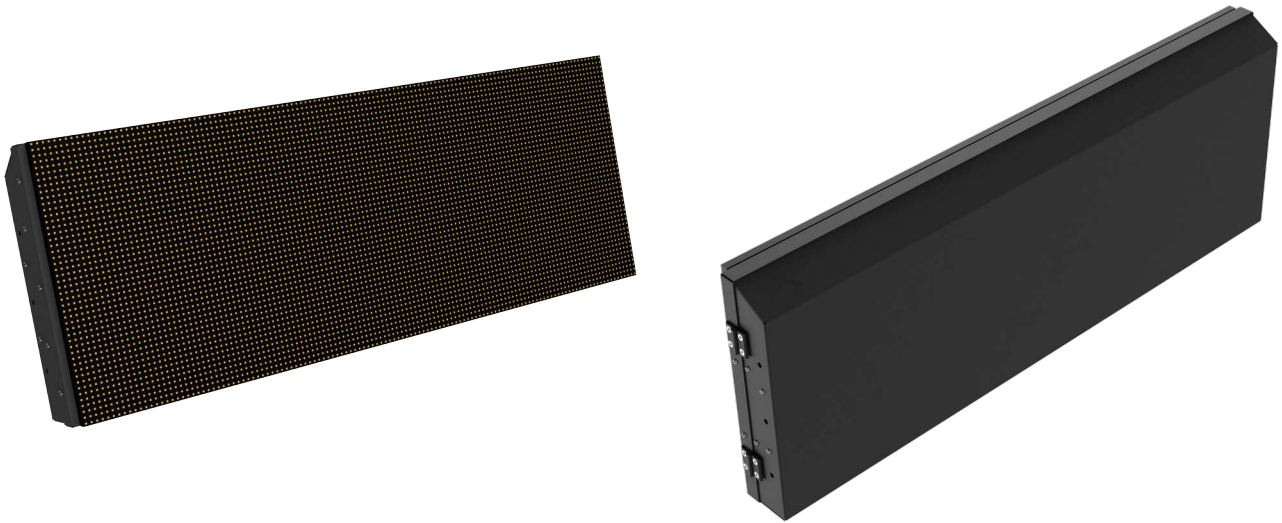
AVMD-128-48M has unique facility of displaying seven colours, two line of clear visible text. It support all Indian

languages. The AVMD-128-48M is working in real time with server to fetch proper vehicle schedule.

Flexible region setting and effect make information more useful and clear for users.

Description	Parameter
Size of display	1280×480×100mm (L x H x W)
Pitch of pixels	10mm
Display resolution	128 (H) x 48 (V)
Colour	RGB 7 colours, day light readable
LED type	SMD PLCC-2
Angle of viewing	120°V, 120°H
Viewing distance	up to 50m
Intensity of Light	4000 cdm or more
Line of text	Up to 4 line English and 3 line in Hindi any other Indian language.
Line height	12 to 32 pixels
Graphics	Pictorial and single colour customised graphics support (any one from 7 colours)
Effects	Fixed, scrolling, flashing
Communication to server	GSM /GPRS or LAN

Description	Parameter
Communication protocol	TCP/IP, URL
Communication interval	Real time (configurable interval from 1s to 256s)
Configuration	SMS or LAN (inbuilt web-server)
Controller and antenna	Inbuilt in display
Other interfaces	RS, USB
Brightness	Auto-brightness according ambient light or brightness setting from server system
Messages (can be customized)	Flexible region setting, All type of font style support
Memory	Inbuilt flash
Maintenance	Front maintenance
Power supply	90 – 240V AC (inbuilt SMPS supply)



Copyright

Copyright © 2021 Atreyo Research and Development LLP. This technical specification is protected under national and international copyright laws. No part of this user manual may be reproduced, distributed, translated, or transmitted in any form or by any means, electronic or mechanical, including photocopying, recording, or storing in any information storage and retrieval system, without the prior written permission of Atreyo Research and Development LLP. Copy or use any part of this specifications is prohibited without the prior written permission from the Atreyo Research and Development LLP. Atreyo Research and Development LLP shall not unreasonably withhold or deny such consent but shall be entitled to receive additional equitable remuneration in connection with its grant of consent.

Trademarks

Atreyo and the Atreyo logo are registered trademarks of Atreyo Research and Development LLP.

All other trademarks and copyrights are the property of their respective owners.

Disclaimer

- All dimensions mentioned in the drawings are not to scale and may vary/differ due to construction contingencies and site conditions which are subject to change as may be decided by the company.
- The specifications and amenities mentioned in this document and promotional documents are only representational and informative. The descriptions in this specification are based on the default configuration of your device.
- Images used in this specification may differ in appearance from the actual product.
- The Atreyo Research and Development LLP reserves rights to make additions, deletions, alterations or amendments as and when it deems fit and proper, without any prior notice.

**Atreyo Research
& Development LLP**

**+91 9727741417
info@atreyo.in**

414, Sunrise Mall, Mansi Circle,
Vastrapur
Ahmedabad 380015, India